

January 2023 New Sleeping Accommodations and Adult Supervision Guidelines

Guidelines for Sleeping Accommodations

Girl Scouts Nation's Capital has transgender and non-binary youth and adult members. We recognize the need for additional guidance on providing inclusive overnight sleeping accommodations for our members.

We now recommend that all overnight Girl Scout activities provide the following accommodation options that support our focus on empowering girls and women:

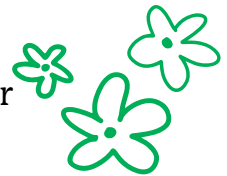
1. Gender Inclusive for cisgender* female, non-binary, and transgender members
2. Female only for cisgender* female members
3. Male only for cisgender* adult male members



We encourage troop leaders and camp directors to provide youth and adult members the opportunity to select their preferred accommodations in advance. In keeping with Girl Scout Safety Guidelines youth members will ideally remain in quarters with other Girl Scout youth rather than with adults. *IMPORTANT: All communications, including emails, should use the language provided in this guideline and the DEIA Commitment.*

Implementation Recommendations

1. Add a sleeping accommodations question to registration forms or permission slips. Include “no preference” as an option.
2. When possible, pre-assign members to a specific room, shelter, tent, etc.
3. Never refer to a sleeping accommodation as “girl-only” or “gender inclusive.” Use a number, color, animals, etc. to describe assigned accommodations.
4. Never call out or isolate a youth member based on their accommodation request.
5. When needed, work with individuals and families to understand concerns and develop resolutions prior to the event.





Adult Supervision

- Girl Scouts remains focused on empowering girls and women; therefore, female role models are an important aspect of the program.
- If a troop leader is non-binary, transgender, or a cisgender male, the second troop leader must be a cisgender* female.

Update to Volunteer Essentials: Following the Girl Scout Safety Guidelines

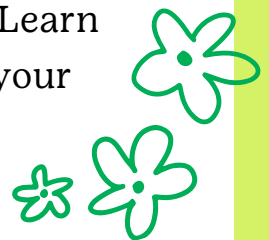


Ensure safe overnight outings

Prepare Girl Scouts to be away from home by involving them in planning, so they know what to expect. **Men require a separate male-specific sleeping space. Gender-diverse Girl Scouts or adults may also request alternative sleeping accommodations.** During family or caregiver youth overnights, one family unit may sleep in the same sleeping quarters in event areas. When caregivers are supporting events, **youth will ideally remain in quarters with other Girl Scout youth rather than with adults.**

For more information, training and additional resources go to gsLearn and find "DEIA Commitment & Inclusive Language Training" on your gsLearn dashboard and/or go to:

<https://www.gscnc.org/en/council/about-us/diversity-equity-inclusion.html>



*Definition of Cisgender: A person whose gender identity corresponds to their sex assigned at birth, i.e., someone who is not transgender or nonbinary

